

C26 X-FILL[®]

CNG System For Large Fleet Applications



FEATURES



COMPRESSOR

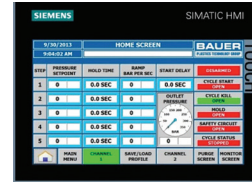
Featuring BAUER's latest state-of-the-art C26 series high inlet pressure, water cooled compressor at the heart of the system.

- ▶ Direct drive allows for small foot print and increased efficiency



COST OF OWNERSHIP

Designed for long periods between maintenance intervals and very low cost of ownership. 8000 hrs between ring changes. 30,000 hrs before major overhaul. Lifetime BAUER support.



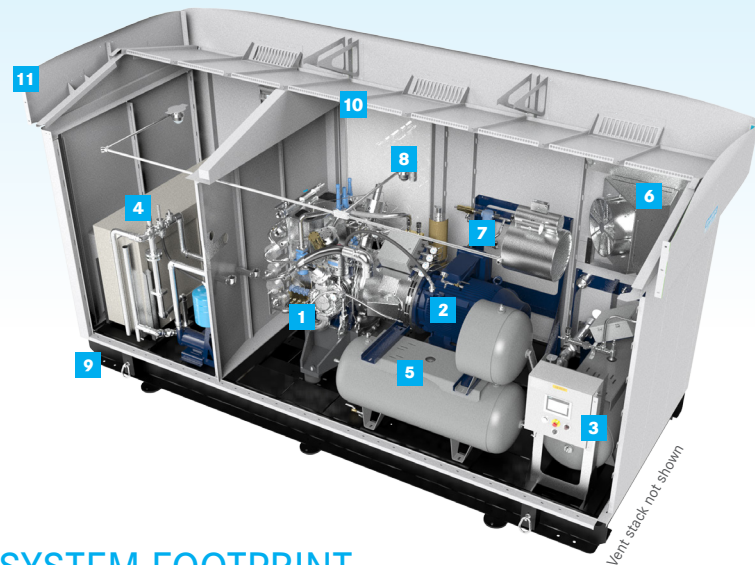
CONTROL SYSTEM

State-of-the-art control system and intuitive machine interface makes operating the unit simple.

- ▶ Excellent diagnostics
- ▶ Remote interface via smartphone option
- ▶ Online manual and operating / maintenance instructions standard

BENEFITS

- ▶ **Powerful, totally integrated system** in a compact footprint with available on-board storage.
- ▶ **BAUER'S legendary performance, quality, and reliability guaranteed**, backed by the best warranty in the industry.
- ▶ **Standard, pre-engineered system with customizable options** such as integrated storage, priority fill, and modem-based mini SCADA system.
- ▶ **Attractive design in a super-quiet package** (75 dB standard / 65 dB option) means that the unit is suitable for public view and placement in densely-populated areas.
- ▶ **Extremely versatile:** Designed to operate reliably in -4°F (-20°C) to 115°F (46°C) climates. Accommodates line pressures of 10 – 215 PSIG.
- ▶ **Low maintenance**, with negligible oil carryover (PPM).



SYSTEM FOOTPRINT

- ▶ 18' L X 7.3' W X 9.75' H

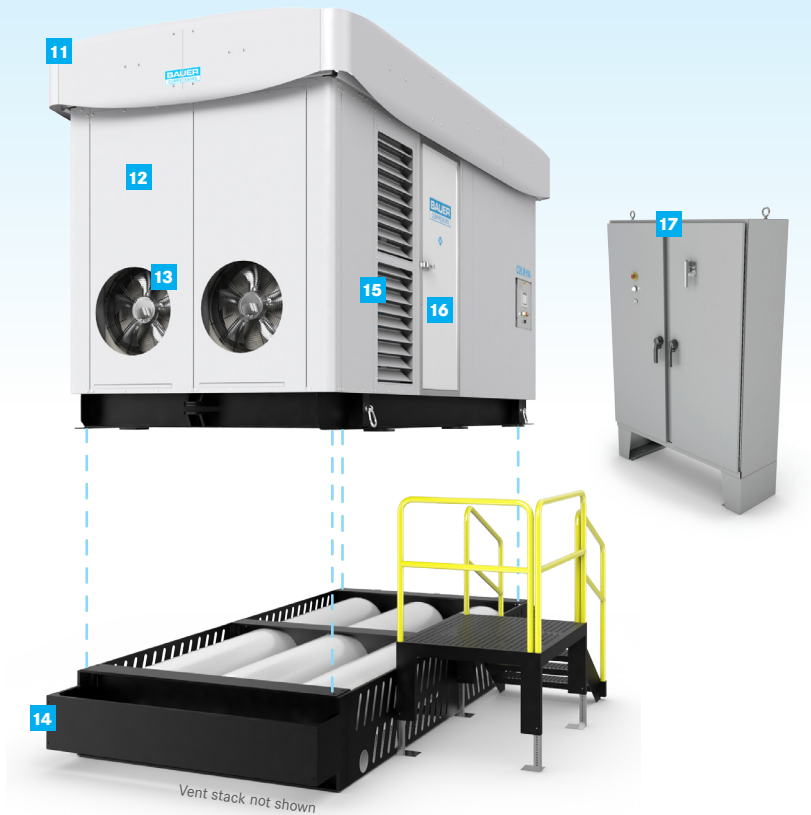
Designed in compliance with NFPA 52 and NFPA 70 for Class 1, Division 2, Group D.

- 1 BAUER C26 WATER-COOLED COMPRESSOR
- 2 HIGH EFFICIENCY TEFC MOTOR
- 3 NEMA 4 CONTROL PANEL WITH INTEGRATED HMI
- 4 SEPARATE COMPARTMENT FOR COMPRESSOR COOLING WATER HEAT EXCHANGER
- 5 INLET BUFFER/VAPOR RECOVERY TANKS
- 6 COMPRESSOR COMPARTMENT EXHAUST FAN
- 7 ELECTRONIC PRIORITY FILL PANEL (OPTIONAL)
- 8 INTERIOR LIGHTING AND INFRARED GAS DETECTOR
- 9 PRECISION FORMED AND WELDED STEEL SKID
- 10 PITCHED METAL ROOF (OBSCURED BY LOGO AWNING)
- 11 CUSTOMIZABLE LOGO AWNING

- 12 WEATHERPROOF AND RUSTPROOF POWDER-COATED GALVANNEAL ENCLOSURE (10 YEAR WARRANTY)
- 13 HEAT EXCHANGER COOLING FANS
- 14 INTEGRATED /3-PACK ASME STORAGE UNDER-SKID (OPTIONAL)
- 15 COOLING AIR INTAKE LOUVERS
- 16 HEAVY-DUTY INSULATED PERSONNEL DOOR
- 17 REMOTE ELECTRICAL-STARTER PANEL

OPTIONAL FEATURES

- ▶ Priority Fill Panel
- ▶ Cell Phone Modem with Remote Notification and simple SCADA
- ▶ Compressor Crankcase Heater
- ▶ Enclosure Space Heater
- ▶ Audible Alarm
- ▶ **Integrated Storage Option:** Fully integrated under-skid high capacity 3-pack ASME storage with access platform and stairs & optional double stack (See chart below)



TECHNICAL DATA

Model	Inlet pressure		Final pressure		Capacity			Number of Stages	Running Speed	Motor				
	PSIG		BAR		CFM	M ³ /H	DGE/H			GGE/H	hp	kW		
	min	max	min	max									max	max
C26.2	10	15	0.7	1	5000	345	200	340	86	100	4	1500	150	110
C26.10	45	65	3.1	4.5	5000	345	360	612	154	180	4	1500	175	132
C26.12	90	145	6.2	10	5000	345	425	722	182	213	4	1500	175	132
C26.13	150	215	10.3	15	5000	345	440	748	189	220	4	1500	175	132

Note: All capacities are based on pipeline quality natural gas supplied at the maximum allowable inlet pressure to the compressor and 3600 psig discharge pressure. For all models lower inlet pressure is possible but with reduced capacity and possibly reduced discharge pressure. Motor power is reference to maximum allowable inlet pressure and 4500 psig discharge pressure. Consult BAUER for performance at other conditions.

OPTIONAL STORAGE CAPACITY

Storage Volume	
Vessel size (each)	24" OD x 1.532" MW x 16' - 3" L 610mm OD x 40mm MW x 4953mm L
Design Pressure	5,380 PSIG 370 BAR
Operating Pressure (max.)	4,800 PSIG 330 BAR
Volume	101.1 cu. ft. 2,863 liter
Capacity (cubic foot)*	35,385 scf CNG @ 4,800 PSIG
Capacity (GGE/DGE)*	295 GGE / 252 DGE
Usable capacity*	98 GGE / 84 DGE

*single stack 3-pack

CUSTOMER SUPPORT

- GLOBAL SUPPORT
- SINGLE SOURCE RESPONSIBILITY
- LOW COST OF OWNERSHIP
- LIFECYCLE PERFORMANCE

FOR MORE INFORMATION PLEASE VISIT:
www.BauerCustomerSupport.com

